



PHOENIX INDUSTRIES

PHOENIX INDUSTRIES is engaged and expertise in the business of manufacturing the *High pressure Valves Fittings . Precision Machined Components and sub assemblies.* With a commitment of setting up increasingly stiff demands on performance and reliability.

Accepts the challenging task by introducing the latest technologies to ensure the supply of production, final inspection, reliable testing at normal and extreme conditions.

We can cater to general and custom requirements with enormous range of *Industrial Valve Stainless Steel Fittings* to any industrial field *Petrochemicals, Chemicals, Power, Paper Pulp, Sugar Production etc.*

Believes in total satisfaction of the customers with mutual understanding and lasting trust. We therefore incessantly strive to provide our customer the highest quality standards and ultimately the highest level of

Contacts Phone- : C.E.O - +91-9552536830

ADMIN - +91- 7720953030

MARKETING - +91- 8975597571

Office And Works : Plot No. D-97, Kagal Five Star M.I.D.C. Kolhapur– 416 236, Maharashtra (INDIA) Email -: ceo@phoenix.ind.in admin@phoenix.ind.in marketing@phoenix.ind.in

Website : www.phoenix.ind.in

Trade India - www.phoenixindustries.tradeindia.com

• *High pressure Valves Fittings*



Types of fittings :

- *Single Ball Check Capped Sealant Injection Fitting*
- *Giant Button head Sealant Injection Fitting.*

Material :

- *SS 316*
- *AISI 4140*
- *Super Duplex*
- *Inconell*

Common connecting thread designations:

Tapered Threads: -

- *1/4-18 NPT,*
- *3/8-18 NPT,*
- *1/2-14 NPT*

Non-Tapered Threads: -

- *1/4 NPS,*
- *3/8 - 18 NPS,*
- *1/2 -14 NPS,*
- *3/4 - 14 NPS.*

Cap Thread: 1-14 UNS.

Taper angle for metal seat: 60 degrees.

Operating Pressure :

6000 to 10000 PSI

As per Customer Requirement



◎ *High pressure Valves Fittings*

	<p><i>Types of fittings : Packing Injection Fitting</i></p> <p><i>Material :</i></p> <ul style="list-style-type: none">• <i>SS 316</i>• <i>AISI 4140</i>• <i>Super Duplex</i>• <i>Inconell</i> <p><i>Common connecting thread designations:</i></p> <p><i>Tapered Threads: -</i></p> <ul style="list-style-type: none">• <i>1/4-18 NPT,</i>• <i>3/8-18 NPT,</i>• <i>1/2-14 NPT</i> <p><i>Non-Tapered Threads: -</i></p> <ul style="list-style-type: none">• <i>1/4 NPS,</i>• <i>3/8 - 18 NPS,</i>• <i>1/2 -14 NPS,</i>• <i>3/4 - 14 NPS.</i> <p><i>Operating Pressure :</i> <i>6000 to 10000 PSI</i> <i>As per Customer Requirement</i></p>
--	---



Type of fitting : Drain Plugs

Material : SS 316 , SS 304, Super Duplex

Threading : 1/4-18 NPT, 3/8-18 NPT,
1/2-14 NPT, 3/4"-14 NPT,
1"- NPT



Nylock Nut :

Material : SS 316 , SS 304, Super Duplex

AISI 4140, GR.8, Gr.6

Threading : All taper and metric serious



Type of fitting : Check Valve

Material : SS 316 , SS 304, Super Duplex

Threading : 1/4-18 NPT,



Vent Plugs :

Material : SS 316 , SS 304, Super Duplex

AISI 4140, Inconel

Threading : All taper and metric serious

◎ *High pressure Valves Seat*



High pressure Valves Seat

Manufacturers Valves seats in precision formats inserted by PTFE /PEEK seals in grooved Face. Base steel in Different materials

Material :

- *AISI4140*
- *SAE410*
- *SAE316*

Sealing Material :

- *PTFE.*

Made for Various sizes of Valves.

- *2 1/16" to 4 1/16 " in various forms*

Working Pressure : 6000 to 12000 PSI



Stems for valve

Manufacturers Valves stems in precision

formats for Gate valves and Butterfly Valves,

Ball valves

Material :

- ***SS 304***
- ***SS 316***
- ***17-4 pH***
- ***Inconel***
- ***Duplex***

Precision Machined Parts

ValveGuide



Pistons for Control Valves



Spools for Control Valve



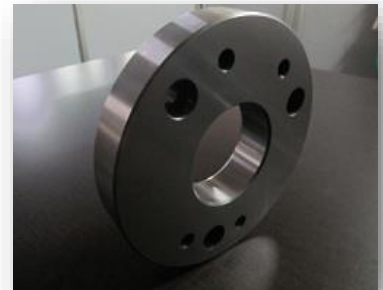
Piston for control Valves



Bearing Inserts



Bearer Ring



Hub Plates



Warm Shaft



Thrust Bearing Race



Retainer Nut



MANUFACTURING FACILITIES



❖ CNC TURNING

- ✓ **Best in class 5 CNC turning centers**
- ✓ **To meet high quality standards of mfg products**
- ✓ **In various sizes to meet wide range of products.**
- ✓ **Varying Dia 160 to Dia 350 chuck size**
- ✓ **Turning Length 200 to 800mm**

❖ Vertical Machining centers

- ✓ **High performance cnc vertical machine.**
- ✓ **Having 300 to 600mm stroke**
- ✓ **Maintained positional accuracy 0.010mm**

MANUFACTURING FACILITIES









- ❖ **Automatic Band saws**
- ❖ **Best in class Automatic Bandsaw Machines**
- ❖ **To meet high quality standards of mfg product**
- ❖ **Varying Dia 10 to Dia 250 mm**
- ❖ **Conventional Machines**
- ❖ **Surface Grinding machine**
- ❖ **Table size 200x600mm**
- ❖ **Conventional lathes to perform special operations**
- ❖ **Drilling machines**
- ❖ **Milling Machines**
- ❖ **Tapping Machines M3 to Size M20**
- ❖ **Digital Imported Marking Machine for product identification**
- ❖ **Hydraulic power press 15 tone capacity**

Testing Facilities



- ❖ **Measuring and Test Equipments**
- ✓ Covered all standard instruments and Gauges
- ✓ Air Gauges to meet precise quality standards of products.
- ✓ 2 D height Masters .
- ✓ Surface Roughness tester.
- ✓ Hardness Tester.
- ❖ **Product Testing**
- ✓ Magnetic Particle testing facility
- ✓ Facility of crack detection after hardening
- ✓ Leakage testing of Fittings
- ✓ Pneumatic Testing ranging 200 psi
- ✓ Hydro-testing ranging 12000 psi

Work Stations :

<p><i>Storage System</i></p> 	<p><i>Tooling Station</i></p> 	<p><i>Sub Assembly station</i></p> 
<p><i>Jig-Fixtures Storage</i></p> 	<p><i>Final Inspection</i></p> 	<p><i>Dispatch Station</i></p> 

Our Valued Customers

 <p>GHATGE PATIL INDUSTRIES LTD.</p>	 <p>MANUGRAPH Technology in Print</p>	 <p>WOM WORLDWIDE OILFIELD MACHINE</p>
 <p>EMERSON</p>	 <p>PARVEEN</p>	
 <p>TATA MOTORS</p>	 <p>CRESCENT FOUNDRY</p>	 <p>TRILLIUM FLOW TECHNOLOGIES™</p>
 <p>hawa valves committed to a safer world™</p>	 <p>metso Expect results</p>	

Why Us ?

- ⦿ *An ISO 9001:2015 Certified Company*
- ⦿ *Competitive Base costing.*
- ⦿ *Advance precision manufacturing facility to meet global quality norms.*
- ⦿ *Multi product Company customize solutions.*
- ⦿ *Specialty in working with stainless steels and Inconel steels.*
- ⦿ *Rigorous final product checking to meet happiness of customer.*